

HYDRAULIC HOSE CONSTANT PRESSURE

THE WORLD OF HOSE

EFG4K



-size	↔		⊘		⌚		🔥		↻		kg/100m	REF.
	DN	"	"	mm	PSI	MPa	PSI	MPa	mm			
-6	10	3/8	0.80	20.2	4000	28.0	16000	112.0	65	71	6EFG4K	
-8	12	1/2	0.95	24.0	4000	28.0	16000	112.0	90	89	8EFG4K	
-10	16	5/8	1.09	27.6	4000	28.0	16000	112.0	100	113	10EFG4K	
-12	19	3/4	1.21	30.7	4000	28.0	16000	112.0	120	128	12EFG4K	
-16	25	1	1.50	38.0	4000	28.0	16000	112.0	150	188	16EFG4K	
-20	31	1.1/4	1.85	47.0	4000	28.0	16000	112.0	210	283	20EFG4K	

RECOMMENDED FOR

Extremely high pressure and high impulse hydraulic applications.

TUBE

NBR (Nitrile) based.

REINFORCEMENT

Four alternating layers of spiralled, high tensile steel wire.

COVER

CR (Chloroprene) based. MSHA approved.

TEMPERATURE RANGE

-40°C to +121°C. For water emulsions, etc. see Temperature Limits Table.

STANDARDS

Exceeds ISO 3862 R12. EN 856 R12. SAE 100R12.

COUPLINGS

GlobalSpiral.

TYPE APPROVALS

DNV, GL, LR, BV and ABS.

CHARACTERISTICS/BENEFITS

40% of EN 856 4SP bend radius at rated working pressure.

Most flexible EN 856 R12 / SAE 100R12 hose in the industry.

Superior flex impulse performance: tested to 1,000,000 impulse cycles at 50% of EN 856 R12 and SAE 100R12 bend radii.

Meets or exceeds performance requirements of EN 856 4SP (-16, -20).

EFG4K hose is compatible with biodegradable hydraulic fluids like synthetic esters, polyglycols and vegetable oils as well as petroleum-based fluids.

OPTIONAL



EFG4K-MTF: the complete range of EFG4K is also available with the Gates special MegaTuff™ cover which offers 300 times the abrasion resistance of the standard EFG4K cover as per ISO 6945, superior ozone and weathering resistance.



EFG4KL: for low-temperature applications, Gates recommends the EFG4KL range down to -57°C constant. Please refer to page 58.

IMPORTANT



Please consult Gates' Product Application Engineers for use of MegaTuff™ hose in reverse bending applications or for constant bending at minimum bend radius.

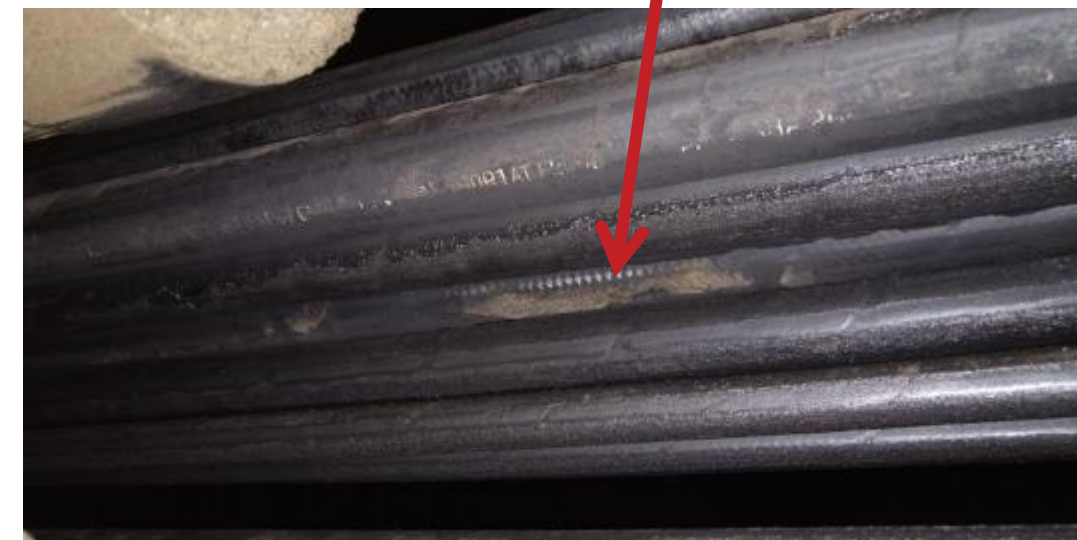


MXG™ 4K SUCCESS STORY: DRILLING EQUIPMENT

TYPE OF EQUIPMENT: Top Hammer Drill

WHAT THEY LIKE ABOUT MXG 4K: Easier to fit and less wear on cover compare to existing competitor hose.

MXG 4K GENERAL DETAILS: Customer has already expressed their interest to try MXG4K on other application.



After 30 days: OEM hose cover showing signs of wear. MXG 4K XTP does not show signs of wear.



MXG™ 4K SUCCESS STORY: MINE TRUCK

INDUSTRY: Mining

TYPE OF EQUIPMENT: Articulated Dump Truck

WHAT THEY LIKE ABOUT MXG 4K: Engineer on site love it due to the flexibility and easier to installed

MXG 4K GENERAL DETAILS: Customer ready to place an order for -12 and -16 once their stock of EFG4K depleted



Upon Installation



After 30 days: No wear signs



TYPE OF EQUIPMENT: Kobelco SK220 XDLC Excavator with TOKU 151LU Breaker

WHAT THEY LIKE ABOUT MXG 4K: Flexibility & easy to fit

MXG 4K GENERAL DETAILS: 2.3 meters of 16 MXG 4K with spring guard are used in dynamic rock breaker application



Kobelco Excavator



Breaker Attachment



MXG Installation (LH & RH)



Dynamic Condition



MXG™ 4K SUCCESS STORY: ROCK BREAKER (2)

TYPE OF EQUIPMENT: JCB JS210 Excavator with Epiroc MB1500 Breaker

WHAT THEY LIKE ABOUT MXG 4K: Flexibility & XtraTuff Plus cover

MXG 4K GENERAL DETAILS: 2.3 meters of 16 MXG 4K with spring guard are used in dynamic rock breaker application



JCB JS210 Excavator



Breaker Attachment



MXG Installation (LH & RH)



Dynamic Condition



TYPE OF EQUIPMENT: JCB JS220 Excavator with Epiroc MB1500 Breaker

WHAT THEY LIKE ABOUT MXG 4K: Flexibility made it easy to fit into breaker

MXG 4K GENERAL DETAILS: 2.2 meters of 16 MXG 4K with spring guard are used in dynamic rock breaker application



JCB JS220 Excavator



Breaker Attachment



MXG Installation (LH & RH)



Dynamic Condition



MXG™ 4K SUCCESS STORY: L2D BOOMER

INDUSTRY: Construction

TYPE OF EQUIPMENT: Epiroc Boomer

WHAT THEY LIKE ABOUT MXG 4K: Lighter weight; XTP cover

MXG 4K GENERAL DETAILS: 3.7 meters of 16 MXG 4K are used in dynamic boomer application in both left-hand and right-hand arms



Epiroc Boomer



Boomer



Rocket Boomer Left-Hand



Rocket Boomer Right-Hand



MXG™ 4K SUCCESS STORY: BOOMER

INDUSTRY: Construction

TYPE OF EQUIPMENT: SANDVIK Boomer /DT1130

WHAT THEY LIKE ABOUT MXG 4K: Flexibility & XTP cover

MXG 4K GENERAL DETAILS: 3.5 meters of 12 MXG 4K are used in dynamic mast application in boomer



Sandvik Boomer



Boomer



DT1130



Mast Application



MXG™ 4K SUCCESS STORY: WATER WELL RIG

INDUSTRY: Drilling Rig

TYPE OF EQUIPMENT: PRD Waterwell Rig

WHAT THEY LIKE ABOUT MXG 4K: Flexibility & Lighter Weight

MXG 4K GENERAL DETAILS: 5 meters of 16 MXG 4K are used in dynamic traveling block in water well rig



Water Well Rig



Traveling Block



MXG Installation



Dynamic Condition